

MAINTENANCE AND REPAIR:

We recommend inspection of the impeller every six months if the fan is operating continuously. The dust from the internal surface should be cleaned by using a dry cloth. Strong detergents or cleaning agents must not be used for cleaning the fan. If the fan is mounted in a dusty environment it is recommended to clean the fan regularly to prevent dust affecting its operation and performance.

The fan is easy to disassemble. After removing the fan from the duct work, remove the connection box and open the casing by unscrewing the 4 screws. Separate the two halves of the casing to get access to the motor / impeller assembly.

ELECTRICAL DETAILS:

Model No.	Power (W)	Current (A)	Airflow (m3 /h)	Rotation (rpm)	Noise (dB)	Insulation Class
CD 100 A	83	0.36	248	2400	65	F
CD 125 A	96	0.43	360	2400	64	F
CD 150 A	79	0.36	450	2400	63	F
CD 160 A	133	0.61	580	2510	69	F
CD 200 A	188	0.87	1030	2480	68	F
CD 250 A	182	0.81	1180	2550	69	F
CD 315 A	168	0.75	1500	2640	69	F

GUARANTEE:

In the sale of its product, Metrico Fans (UK) Ltd agrees to replace or repair any defects in workmanship or material that may develop under proper and normal use during a period of one year from the date of shipment from the factory. Additional warranty or special warranty if required can be requested from the distributor and the same will be at their discretion.

Damage due to wear caused by chemicals, abrasive action or excessive heat shall not constitute defects.

Metrico's warranty does not apply to any of its products or parts that have been subject to accidental damage, misuse by the user, unauthorized alterations, improper installation or electrical wiring or other service requirements as issued by Metrico.

METRICO
FANS (UK) LTD

Centrifugal In-line Duct Fans

Installation, Operation and Maintenance Manual
CD Models



Before using this unit, please read these instructions carefully

All enquiries to local distributor or to: -

Sales Office :

Metrico Fans (UK) Ltd.,
P.O. Box-4479, Wolverhampton,
West Midlands, England
Tel. : +44 1746 783789
Fax : +44 1746 783781

Manufacturing Unit :

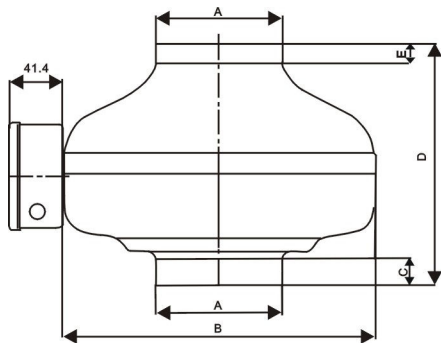
Victoria Fans Limited / Metrico Industrial Fans Ltd.
Mossley,
Lancashire
OL5 9HW,
England

FEATURES:

Centrifugal Duct Fan includes housing, impeller, external rotor motor and connection / terminal box.

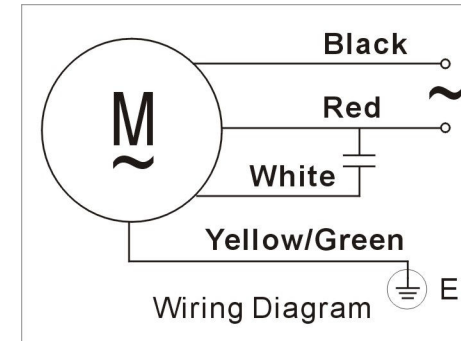
1. **Housing:** Formed from quality deep-stretched cold rolled steel with epoxy polyester coated for a strong anti-corrosive surface. The computerized fluid channel design of the casing gives high efficiency. The inlet and outlet are of the same diameter which makes it easy for installation and maintenance. The fans are available in 7 sizes i.e. 100mm, 125mm, 150mm, 160mm, 200mm, 250mm and 315mm.
2. **Impeller:** Backward curved centrifugal impellers of galvanized steel matching with the housing to maximize the airflow, efficiency and minimize noise.
3. **Motor:** The motor is single phase, asynchronous, external rotor type. The impeller and motor are pressed to form an integral assembly with compact design for stable performance, high efficiency and durability.
4. **Connection / Terminal Box :** The connection box is formed from fire resistant PVC, easy to open for access to connect electrical supply and is IP 54 rated.

DIMENSIONAL DRAWING:

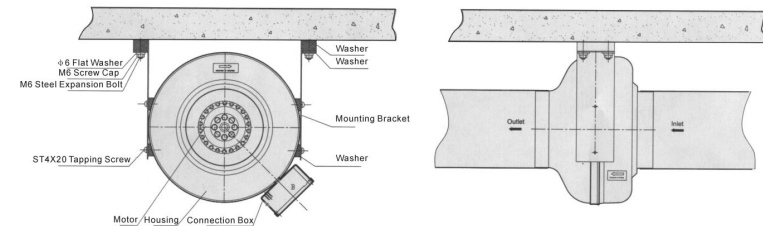


No.	Model No.	A	B	C	D	E	Impeller Diameter (mm)
1	CD 100 A	100	242	20	186	15	190
2	CD 125 A	125	243	25	189	22	190
3	CD 150 A	150	271	20	193	20	190
4	CD 160 A	160	345	27	228	27	220
5	CD 200 A	200	345	27	228	29	250
6	CD 250 A	250	345	27	228	29	250
7	CD 315 A	315	400	27	259	29	250

WIRING DIAGRAM:



INSTALLATION AND OPERATION:



1. Rotate the impeller by hand before operation to make sure that the impeller is moving freely and there is no transit or installation damage to the casing.
2. If the fans have not been used for 6 months perform an insulation resistance test to the units. The resistance should be greater than 20 MΩ.
3. In order that the fan is installed correctly, check that the required direction of airflow conforms to the airflow direction sticker on the fan casing before installation.
4. Hang the fan from the ceiling using the mounting kit consisting of mounting bracket, anti-vibration mounts, studs and screws.
5. Connect the electrical supply as per the wiring diagram shown above and check if the direction of rotation of the impeller corresponds to the direction of rotation arrow on the fan.
6. Connect the inlet and outlet directly to the duct with appropriate hose clamp (supplied by others).
7. Record the running current readings on starting the fan and ensure it is within the limits of the Electrical Data in this manual.