



PIPE CLAMPS



NUT WELDED CLAMP

Mild Steel Zinc Electro plated clamp.
Welded combination connecting Nut of size M8 + M10 or M10 + M12.
Lock Bolts & Nuts M6 & M8 Combi Head Cross recessed for extra strength.
Available in EPDM Rubber Lining or without Rubber Lining. Lock Bolt with Plastic Washer.
Maximum Load Capacity : 1/2" - 1"-100 kgs, 1 1/2" - 2"-200 kgs., 2 1/2" - 4" - 350 kgs., 5" - 6" - 500 kgs.



PIPE HANGER FOR SPRINKLER SYSTEMS

Mild Steel Zinc Electro plated clamp. For mounting Steel Piping for Sprinkler Systems.
Rigid fastening with easy installation, made to take the full load of system operation.
Available for pipe size of 1/2" to 8". Braking loads as per International Standards.
Available with EPDM Rubber Lining or without Rubber Lining.

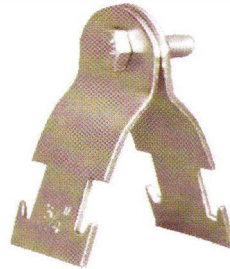


UNIVERSAL CLAMPS WITH SWIVEL NUT

Mild Steel Zinc Electro plated clamp. Specially designed for heavy duty condenser water lines, fire lines and sanitary lines.
Suitable for hanging lines with varying distances between pipe and ceiling - allowing vertical alignment / adjustment of line even after installation.
Available for pipe size of 1/2" to 8". Braking loads as per International Standards.
Available with EPDM Rubber Lining or without Rubber Lining. Can be supplied only clamp or complete with 2 Nuts and 2 washers

CLEVIS HANGER

Mild Steel Zinc Electro plated clamp.
Specially designed for mounting steel piping for sprinkler systems.
Available for pipe size of 1/2" to 8".
Braking loads as per International Standards.



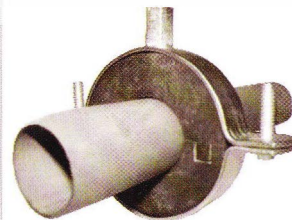
STRUT CLAMPS

Mild Steel Zinc Electro plated.
For mounting pipes on channels.
Supplied with one Nut & One Bolt.
Available for pipe size of 1/2" to 8".



RAISER CLAMP

Mild Steel Zinc Electro plated.
Designed to act as a rigid support or guide for vertical pipe.
Suitable for use with all type of pipe materials.
Available for pipe size of 1/2" to 8".



RUBBER SUPPORT INSERTS

Mild Steel Zinc Electro plated.
For mounting all type of insulated pipes.
Tongue and Groove joints to prevent ingress of air.
Minimise transmission of noise and vibration.



OFFSET RAISER CLAMP

Mild Steel Zinc Electro plated.
Designed to act as a rigid support and fixing pipes away from wall or floor.
Available for pipe size of 1/2" to 8".

