



Keeping The **Middle East Cool**

Since 1995



www.rapidcool.ae





ABOUT US

Established in 1995 through a small trading office in Dubai, Rapid Cool Group of Companies is a leading supplier of high-quality products in the HVAC industry. Today, the group has branches across the UAE with offices in Dubai and Sharjah along with regional partners in the Gulf. Our team comprises of over 150 highly skilled employees who continue to ensure high quality customer satisfaction. Over the past two decades, Rapid Cool has been fortunate to be part of several major developments both in the UAE and Gulf. Rapid Cool's operations can be categorized into three major divisions:

TRADING DIVISION

The trading division is an exclusive distributor of major HVAC brands from Europe and USA. The product range includes ventilation fans (local civil defense approved), ecology units, vibration isolators & central a/c components, air curtains, acoustic lagging, sound attenuators and cooling tower components.

SERVICE DIVISION

Recently introduced, the service division complements Rapid Cool's manufacturing and trading division as it focuses on installations, maintenance and after sales. Our dedicated and highly experienced team can attend to all types of site issues.

MANUFACTURING DIVISION

The manufacturing division specializes in the fabrication of HVAC duct and duct accessories. The facility is equipped with state-of-the-art machinery and is ISO 9001, 14001 and 18001 certified. Duct range includes galvanized steel, stainless steel and pre-insulated ducting. Our accessory range includes sound attenuators, volume control dampers, VAV terminals, grilles and diffusers, access doors, drip trays etc.



TRADING DIVISION



(SPAIN)

SMOKE & FIRE RATED FANS

Axial & centrifugal industrial application fans
Jet fans & induction fans for basement car parks
Smoke & fire rated fans 400°C / 2 hours
Explosion proof ATEX rated fans
CFD analysis available upon request
Local civil defense approval



AMERICAN
Coolair (USA)

BELT DRIVEN INDUSTRIAL FANS

Roof mounted ventilators for kitchen exhaust
Square inline centrifugal fans
Aluminum centrifugal roof up blast / down blast fans
AMCA certified for performance & sound
UL listed



METRICO
FANS (UK) LTD.



Victoria Fans (UK)
LIMITED

FANS, ESP & ECOLOGY UNITS

Window / wall / ceiling mounted fans
Duct inline circular fans / Cabinet single & twin fans
Explosion proof fans for offshore & mining applications
Wind driven turbo ventilators
Electrostatic Precipitator (Manual Wash) / Ecology Units



ÖSTBERG
THE FAN COMPANY

(SWEDEN)

60 HZ INLINE FANS

Oilfield & marine special application fans
Circular ducted inline fans
Roof mounted fans
ATEX certified explosion proof fans



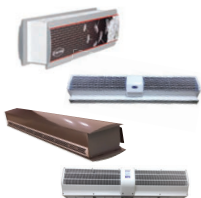
**AIR QUALITY
ENGINEERING**

(USA)

AIR PURIFICATION & ECOLOGY UNITS

Electrostatic precipitator (manual / auto wash)
Ecology units (mechanical / electronic)
Smoke purification units (for shisha / cigar lounges)
HEPA filtration units (for hospital applications)
ETL listed

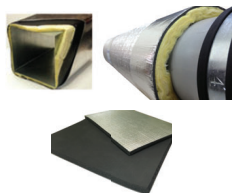
TRADING DIVISION



(GREECE)

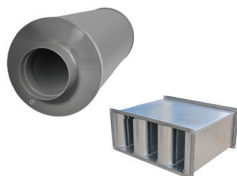
AIR CURTAINS

Designer, commercial & industrial type
Ambient, water cooled & electrically heated type
Wall / exposed mounted & recessed range
Available in various lengths from 1m to 2m
Interlocking with door and fire alarm system
BMS compatibility (selected models only)

**SOUND SEAL®** (USA)

ACOUSTIC LAGGING

For drainage pipe and duct insulation
0.09" (2.3mm) thick noise barrier with surface density of 1lb/ft² (5kg/m²) with 1" (25mm) thick scrim faced quilted fiberglass decoupler on one side and reinforced aluminum facing on the other side
STC 27 rating (ASTM E-90-09)
Class A flammability rating (ASTM E 84)
Foam decoupler available upon request



(UAE)

SOUND ATTENUATORS

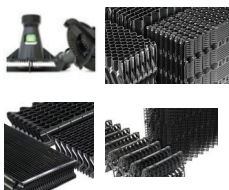
Designed in technical collaboration with METRICO (UK)
Manufactured inhouse at Rapid Cool Industries
Available in galvanized steel and stainless-steel construction
Rectangular, round and L-shaped attenuators
Acoustic performance independently tested in USA



(INDIA)

VIBRATION ISOLATORS & CAC COMPONENTS

Ribbed Rubber / Rubber Cork Rubber / Rubber Steel Rubber Pads
Anti vibration rubber mounts & anti vibration rubber hangers
Anti vibration rubber and spring mounts
Anti vibration spring hangers & mounts for Fans & AHUs
Heavy Duty anti vibration spring mounts for Chillers

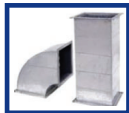
**BRENTWOOD®** (USA)

COOLING TOWER COMPONENTS

Innovative high efficiency fills and drift eliminators
Fills: Cross fluted, vertical fluted, offset fluted & modular splash fills
Drift eliminators: Cellular & blade drift eliminators
Patented MA (mechanical assembly) technology eliminating use of VOC solvents
CTI standard 136 2010

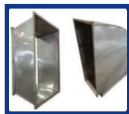
■ MANUFACTURING DIVISION

GALVANIZED (GI) STEEL DUCTS



GALVANIZED STEEL ducts are fabricated through hot dipped galvanized steel zinc coating of 275g/m² (Z27) equivalent to G90. Fabrication can be done in accordance with SMACNA, DW 144 or any customized specification. Ducts can be manufactured for fire rated application in accordance to Flambar or Fenland FFC specifications. Fire resistant coating can be organized through local authorized dealers of these companies.

STAINLESS (SS) STEEL DUCTS



STAINLESS STEEL (SS) ducts are fabricated out of stainless-steel sheets grade 316L or grade 304 with mill finish or 2B finish as specified. Stainless steel ducts are fabricated in Pittsburgh lock formed longitudinal seams from 0.50 mm to 0.90 mm and fully welded longitudinal seams with stainless steel companion angle flanges from 1.00 mm to 3.00 mm thickness.

BLACK CARBON STEEL DUCTS



BLACK CARBON STEEL ducts are fabricated with full seam welding at longitudinal seams and are ideal for kitchen extract applications. Ducts are fabricated air and water tight in accordance to DW 172 or any customized specification. Mild steel companion angle flanges for transverse joints are fully welded at the lip and tack welded at the back to provide air and water

ALUMINUM DUCTS



ALUMINUM ducts are fabricated from 0.60 mm to 3.00 mm thickness with Pittsburgh lock formed longitudinal seam. Fully welded longitudinal seam can be provided for use in special applications such as swimming pools, laboratories etc. Longitudinal Seams are selected based on application, pressure class and size of the ducts. These can be cleated, self-flanged or use in companion angles flanges.

PRE-INSULATED (PIR) DUCTS



PRE-INSULATED PIR Ducts are fabricated for non-fire hazardous application. Due to its light weight and easy installation PIR Ducts are popular and widely accepted for open areas such as shopping malls, villas and apartments. PIR ducts can be supplied using any specified brand with professionalism in a cost-effective manner.

MANUFACTURING DIVISION



VARIABLE AIR VOLUME (VAV) TERMINALS UNITS

BY PASS VAV TERMINAL UNITS are designed to ensure low leakage and air tight operation in accordance to International standards of DW 144 & ASHRAE. Data is tested in accordance to ARI Standards.



MANUAL & MOTORIZED VOLUME CONTROL DAMPER (VCD)

VOLUME CONTROL DAMPERS are designed to meet airflow control requirement of the air ducts maintaining constant pressure drop. The dampers are manufactured for rectangular, round or oval duct system using high quality galvanized steel or stainless steel. Blade profile varies depending upon usage and specifications. These are:

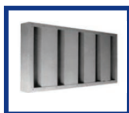
- Double skin aero foil blades parallel or opposed blades
- Single skin V grooved blades
- Single skin plate blades



ACCESS DOORS

ACCESS DOORS are manufactured using high quality material steel sheets, insulation and gasket meeting international standards. Construction type varies depending upon utility. These are:

- Detachable type for rectangular ducts with cam lock
- Hinged type for rectangular ducts with hinge and cam lock
- Access doors for round ducts
- Fire-resistant heavy-duty access doors



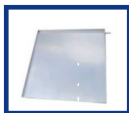
SAND TRAP LOUVERS

SAND TRAP LOUVERS are designed to trap large sand particles from fresh air intakes at high velocity. This reduces excessive usage of filter media. Accessories include filters and wire mesh. Sand trap louvers are manufactured after a thorough study of the system free area, pressure drop and airflow. The construction material varies with utility and includes aluminum, stainless steel, galvanized steel and powder coated.



NON-RETURN DAMPERS

NON-RETURN DAMPERS are designed to allow air flow one way at a preset pressure and prevent back flow. Casing is constructed using 18-gauge galvanized steel sheets. Blades are manufactured using 0.50 mm - 1.00 mm extruded aluminum. A pressure designed counter weight is provided to hold the set pressures.



DRIP TRAYS

DRIP TRAYS are designed and manufactured to prevent falling of drain water from fan coil units above the false ceiling. The drip trays are constructed using galvanized steel or stainless-steel sheets with a drain connection and insulation.



Keeping The **Middle East Cool**
Since 1995

Rapid Cool Trading Co. L.L.C.

1307 Clover Bay Tower, Business Bay

P.O. Box 2034, Dubai, U.A.E.

Tel: +971 4 425 6663 | Fax: +971 4 276 5891

info@rapidcool.ae

Rapid Cool Fire Fighting Equipment Trading EST

Dubai Branch

P.O. Box 2034, Dubai, U.A.E.

Tel: +971 4 425 6663

Sharjah Branch

P.O. Box 22435, Sharjah, U.A.E.

Tel: +971 6 526 6888

www.rapidcool.ae