

CIRCULAR INLINE CENTRIFUGAL METAL DUCT FANS**DUCT INLINE FANS**

Metal duct inline fans available in 7 sizes with airflow from 0.066 m³/s to 0.416 m³/s at free air discharge and pressure development up to 300 Pa.

CONSTRUCTION

The fan housing is manufactured from epoxy coated galvanized steel. This coating of epoxy paint is grey in colour and gives protection against atmospheric corrosive agents. The fans are supplied complete with mounting bracket for horizontal or vertical mounting.

The fans are moisture resistant and are approved for installing in humid or damp environments.

MOTORS / IMPELLERS

The CD range of centrifugal fans is fitted with an external rotor motor and backward curved non-overloading impeller assembly for long life and reliability. All sizes have metallic impeller manufactured from heavy gauge galvanized steel.

The motor enclosure is IP44 rated. The ball bearings are greased for life and are designed to run at any angle. The motor insulation is Class 'F' suitable to operate from -30 °C to +60 °C.

The motors are 220-240V / 50 Hz single phase, capacitor start and run. An IP55 rated terminal box is mounted on the casing, which is factory prewired to the motor. The terminal box has a 20mm entry and encloses the capacitor. All motors are provided with Standard Thermal Overload Protection (S.T.O.P.) in which the automatic thermo-contacts open if the temperature within the motor windings becomes excessive.

All motors are suitable for speed control with dimmer type speed controllers by voltage variation.

ACCESSORIES

Back Draft Shutters: Circular back draft shutters are made of galvanised steel casing with aluminum butterfly shutters. The shutters are spring loaded for positive closing and hence can be fitted in any position.

Speed Controllers: Dimmer type controllers operating on voltage variation principle.

Louvre Shutters: Gravity type louvre shutters to prevent against back draughts with very low airflow resistance. The frame is manufactured from high impact polystyrene with PVC blades. The complete assembly is UV stabilised.

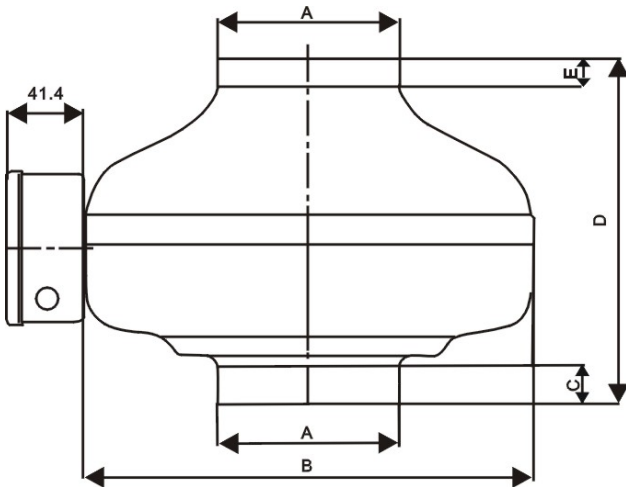
PERFORMANCE DATA

MODELS	DUTY : cfm @ inches of w.g.								
	0	0.1	0.2	0.3	0.4	0.5	0.6	0.8	1.0
CD 100A	146	141	135	124	116	108	102	83	62
CD 125A	212	198	184	168	155	140	126	98	66
CD 150A	265	256	235	210	192	176	162	126	94
CD 160A	350	345	340	323	305	284	268	235	180
CD 200A	606	595	585	525	465	410	370	315	265
CD 250A	694	630	613	588	571	546	522	470	400
CD 315A	882	846	780	724	655	588	500	405	310

TECHNICAL DATA

MODELS	Motor (Watts)	Current (Amps.)	Speed (rpm)	dBA	Insulation Class	Weight (Kgs.)
CD 100A	83	0.36	2360	55	F	3.5
CD 125A	96	0.43	2380	55	F	3.5
CD 150A	79	0.36	2380	57	F	3.8
CD 160A	133	0.61	2480	59	F	5.3
CD 200A	188	0.87	2445	61	F	5.8
CD 250A	182	0.81	2550	63	F	6.0
CD 315A	168	0.75	2625	65	F	6.8

DIMENSIONS



MODELS	ØA	B	C	D	E	Impeller Diameter
CD 100A	100	242	20	186	15	190
CD 125A	125	243	25	189	22	190
CD 150A	150	271	20	193	20	190
CD 160A	160	345	27	228	27	220
CD 200A	200	345	27	228	29	250
CD 250A	250	345	27	228	29	250
CD 315A	315	400	27	259	29	250

ALL ABOVE DIMENSIONS ARE IN MM

Sales Office :
 Metrico Fans (UK) Ltd.,
 P.O. Box-4479, Wolverhampton,
 West Midlands, England
 Tel. : +44 1746 783789
 Fax : +44 1746 783781

Manufacturing Unit :
 Victoria Fans Limited / Metrico Industrial Fans Ltd.
 Mossley, Lancashire OL5 9HW,
 England
 Tel. : +44 1457 835891
 Fax : +44 1457 833378